

UTOWN@UBC Nature Club



Backyard Birding Log

**Make new friends while getting to know your
human, plant and animal neighbours!**



a place of mind

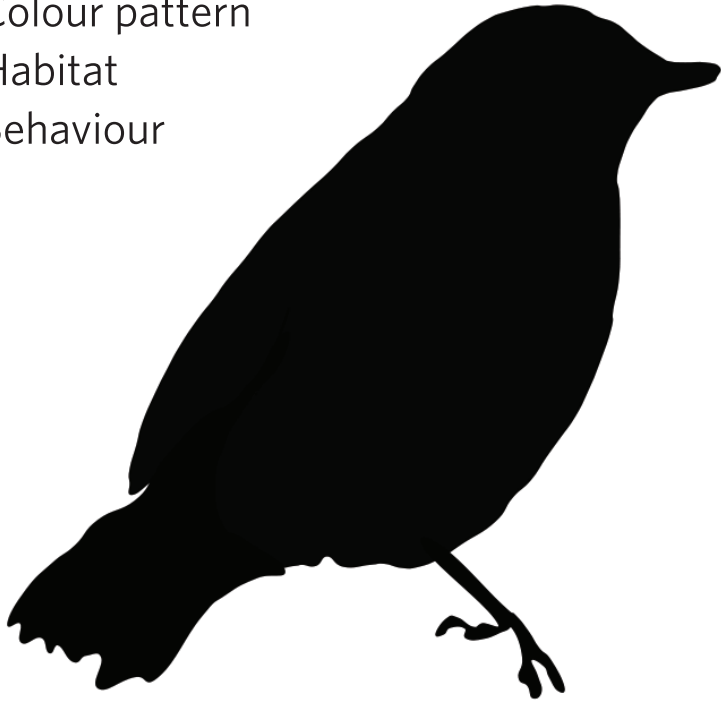


ubcbotanicalgarden
& centre for plant research

Use this log to record your observations of the birds you see.

When looking at new and unfamiliar birds, pay attention to:

- Sound
- Size
- Shape
- Colour pattern
- Habitat
- Behaviour



Use this guide as a starting point for birding on campus. More information can be found in field guides (make sure the field guide you use is for the area you are birding) or online. A great online resource is the Cornell Lab of Ornithology (allaboutbirds.org). This site has a good collection of bird sounds that can be used to identify the birds you hear.

Where are the best birding spots in your neighbourhood?

Explore UBC's campus!

Birds can often be found around feeders, water and plants with flowers, fruits or seeds. Look in courtyards, parks and forested areas.

Keep a list of your favourite spots:

1. _____
2. _____
3. _____
4. _____
5. _____
6. _____
7. _____
8. _____
9. _____
10. _____

Date _____ Location _____

Can you identify the bird?

My bird is a: _____

Sound

Did you hear the bird sing? YES/NO

If yes, what did it sound like? _____

Size

Circle the size of the bird below.

Very small	Small	Medium	Big
Under 12 cm	12-22 cm	22-40 cm	Over 40 cm

Shape

Circle the appropriate silhouette for the bird below.



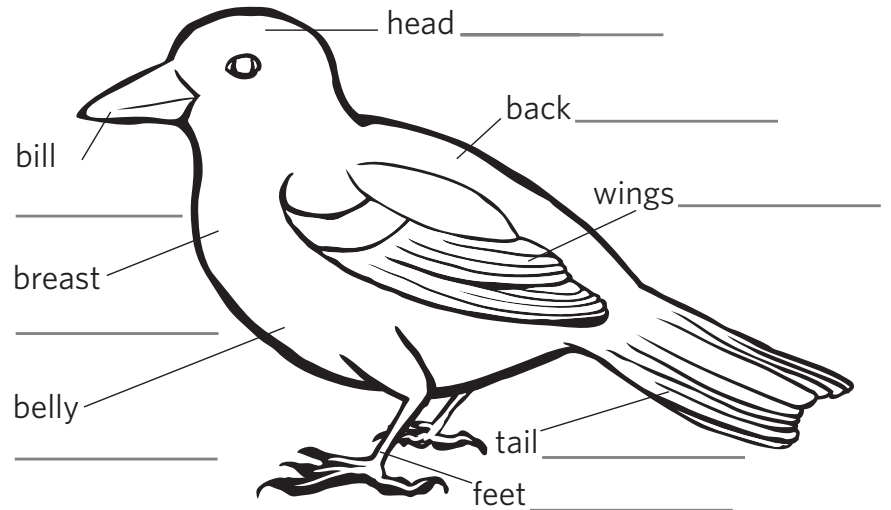
OTHER:

If the bird doesn't match one of these silhouettes, draw its shape.



Colour Pattern

Write down what colours you saw on different parts of the bird. When you get home you can colour it in.



Habitat

What habitat was it in? (Ex. forest, lake)

Where was it? (Ex. on the ground, in the trees)

Behaviour

What was it doing? (Ex. eating, flying)

Was it alone or was it with others?

Date _____ Location _____

Can you identify the bird?

My bird is a: _____

Sound

Did you hear the bird sing? YES/NO

If yes, what did it sound like? _____

Size

Circle the size of the bird below.

Very small	Small	Medium	Big
Under 12 cm	12-22 cm	22-40 cm	Over 40 cm

Shape

Circle the appropriate silhouette for the bird below.



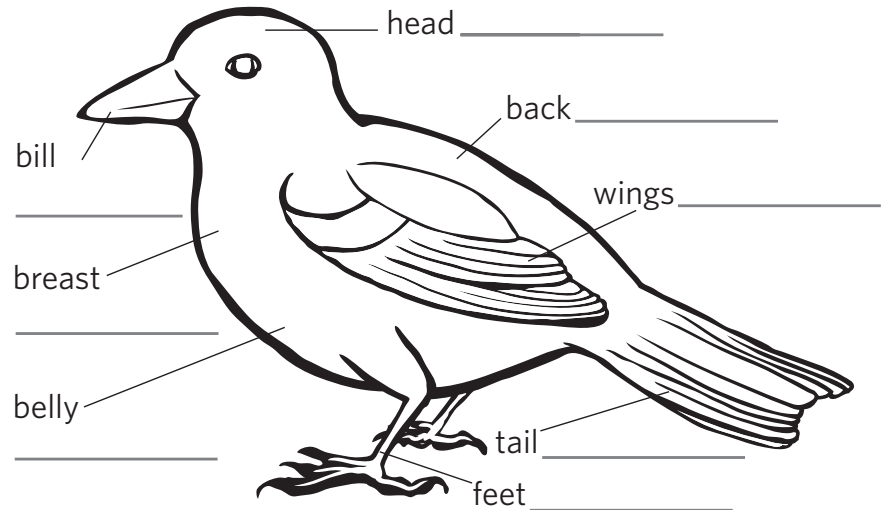
OTHER:

If the bird doesn't match one of these silhouettes, draw its shape.



Colour Pattern

Write down what colours you saw on different parts of the bird. When you get home you can colour it in.



Habitat

What habitat was it in? (Ex. forest, lake)

Where was it? (Ex. on the ground, in the trees)

Behaviour

What was it doing? (Ex. eating, flying)

Was it alone or was it with others?

Date _____ Location _____

Can you identify the bird?

My bird is a: _____

Sound

Did you hear the bird sing? YES/NO

If yes, what did it sound like? _____

Size

Circle the size of the bird below.

Very small	Small	Medium	Big
Under 12 cm	12-22 cm	22-40 cm	Over 40 cm

Shape

Circle the appropriate silhouette for the bird below.



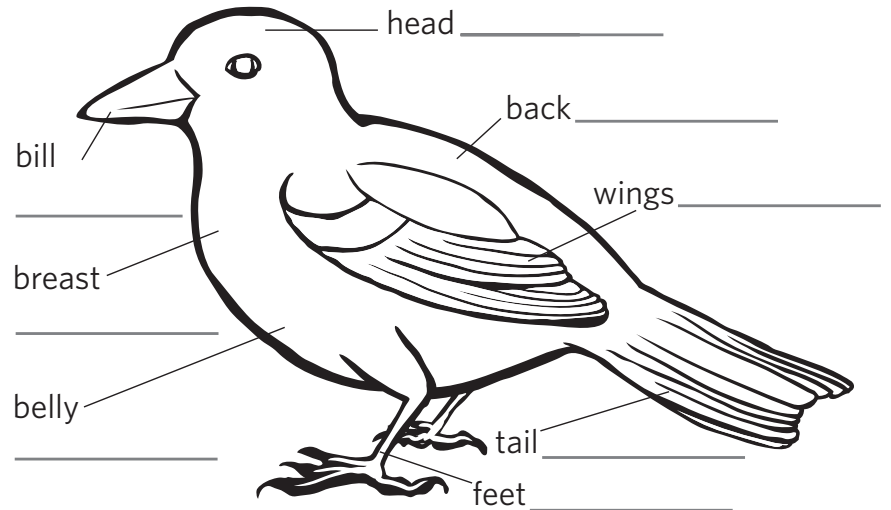
OTHER:

If the bird doesn't match one of these silhouettes, draw its shape.



Colour Pattern

Write down what colours you saw on different parts of the bird. When you get home you can colour it in.



Habitat

What habitat was it in? (Ex. forest, lake)

Where was it? (Ex. on the ground, in the trees)

Behaviour

What was it doing? (Ex. eating, flying)

Was it alone or was it with others?

Date _____ Location _____

Can you identify the bird?

My bird is a: _____

Sound

Did you hear the bird sing? YES/NO

If yes, what did it sound like? _____

Size

Circle the size of the bird below.

Very small	Small	Medium	Big
Under 12 cm	12-22 cm	22-40 cm	Over 40 cm

Shape

Circle the appropriate silhouette for the bird below.



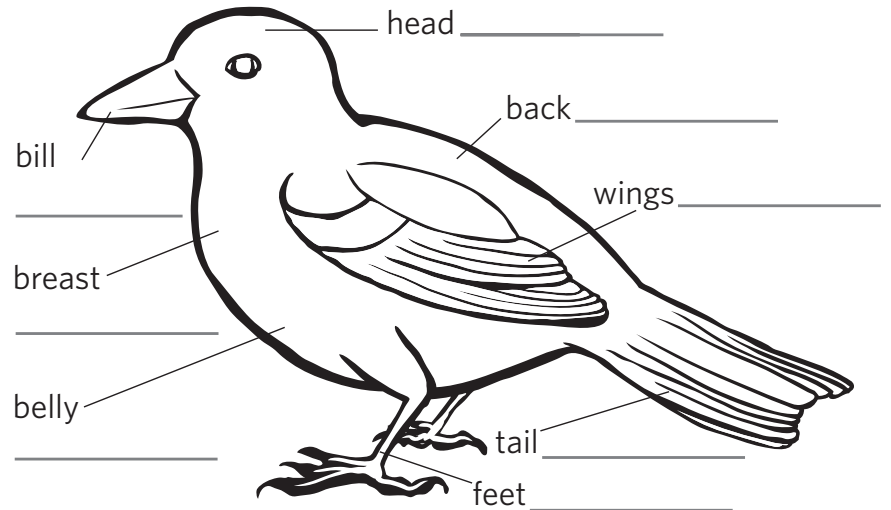
OTHER:

If the bird doesn't match one of these silhouettes, draw its shape.



Colour Pattern

Write down what colours you saw on different parts of the bird. When you get home you can colour it in.



Habitat

What habitat was it in? (Ex. forest, lake)

Where was it? (Ex. on the ground, in the trees)

Behaviour

What was it doing? (Ex. eating, flying)

Was it alone or was it with others?

Date _____ Location _____

Can you identify the bird?

My bird is a: _____

Sound

Did you hear the bird sing? YES/NO

If yes, what did it sound like? _____

Size

Circle the size of the bird below.

Very small	Small	Medium	Big
Under 12 cm	12-22 cm	22-40 cm	Over 40 cm

Shape

Circle the appropriate silhouette for the bird below.



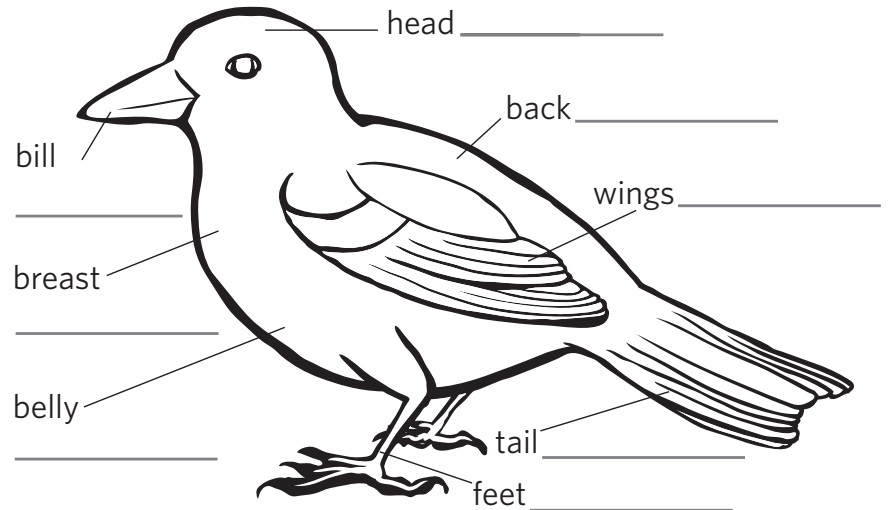
OTHER:

If the bird doesn't match one of these silhouettes, draw its shape.



Colour Pattern

Write down what colours you saw on different parts of the bird. When you get home you can colour it in.



Habitat

What habitat was it in? (Ex. forest, lake)

Where was it? (Ex. on the ground, in the trees)

Behaviour

What was it doing? (Ex. eating, flying)

Was it alone or was it with others?

Date _____ Location _____

Can you identify the bird?

My bird is a: _____

Sound

Did you hear the bird sing? YES/NO

If yes, what did it sound like? _____

Size

Circle the size of the bird below.

Very small	Small	Medium	Big
Under 12 cm	12-22 cm	22-40 cm	Over 40 cm

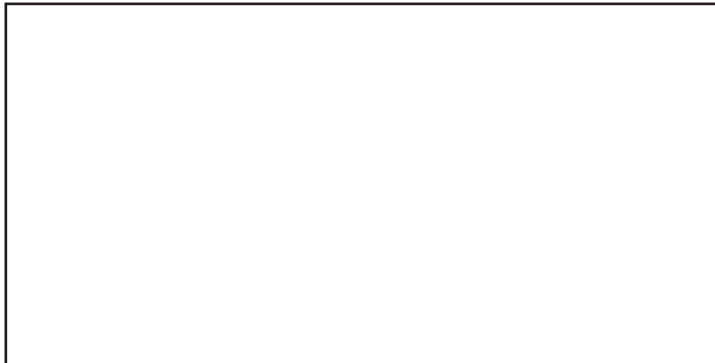
Shape

Circle the appropriate silhouette for the bird below.



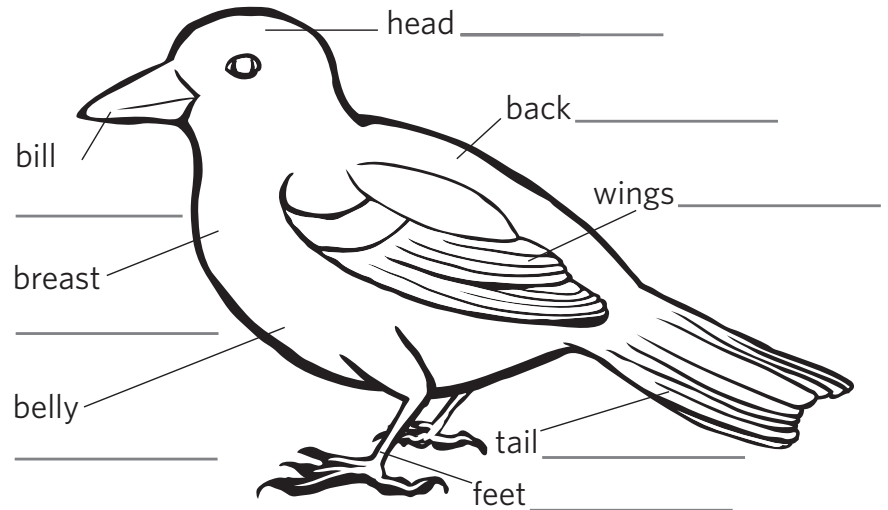
OTHER:

If the bird doesn't match one of these silhouettes, draw its shape.



Colour Pattern

Write down what colours you saw on different parts of the bird. When you get home you can colour it in.



Habitat

What habitat was it in? (Ex. forest, lake)

Where was it? (Ex. on the ground, in the trees)

Behaviour

What was it doing? (Ex. eating, flying)

Was it alone or was it with others?

Date _____ Location _____

Can you identify the bird?

My bird is a: _____

Sound

Did you hear the bird sing? YES/NO

If yes, what did it sound like? _____

Size

Circle the size of the bird below.

Very small	Small	Medium	Big
Under 12 cm	12-22 cm	22-40 cm	Over 40 cm

Shape

Circle the appropriate silhouette for the bird below.



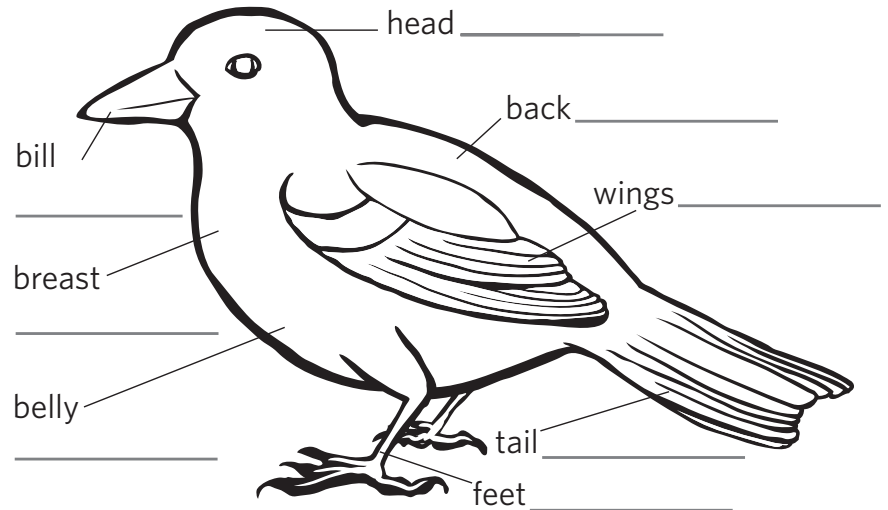
OTHER:

If the bird doesn't match one of these silhouettes, draw its shape.



Colour Pattern

Write down what colours you saw on different parts of the bird. When you get home you can colour it in.



Habitat

What habitat was it in? (Ex. forest, lake)

Where was it? (Ex. on the ground, in the trees)

Behaviour

What was it doing? (Ex. eating, flying)

Was it alone or was it with others?

Date _____ Location _____

Can you identify the bird?

My bird is a: _____

Sound

Did you hear the bird sing? YES/NO

If yes, what did it sound like? _____

Size

Circle the size of the bird below.

Very small	Small	Medium	Big
Under 12 cm	12-22 cm	22-40 cm	Over 40 cm

Shape

Circle the appropriate silhouette for the bird below.



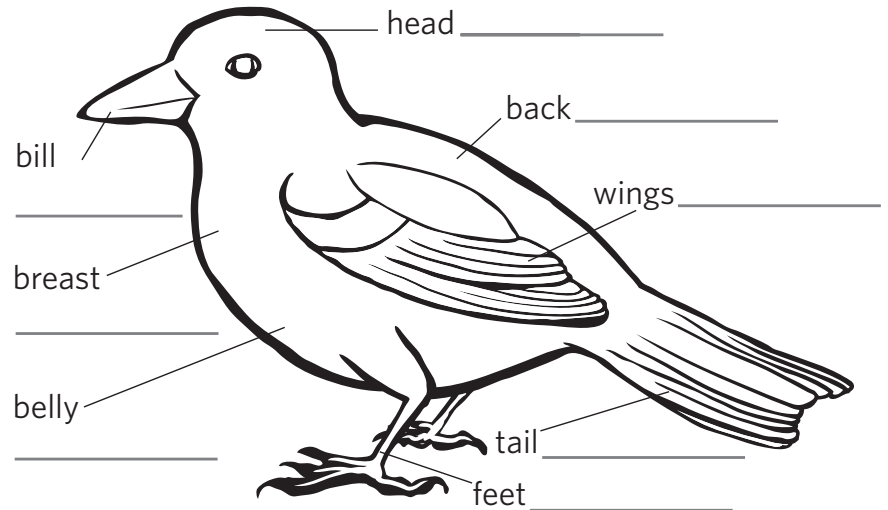
OTHER:

If the bird doesn't match one of these silhouettes, draw its shape.



Colour Pattern

Write down what colours you saw on different parts of the bird. When you get home you can colour it in.



Habitat

What habitat was it in? (Ex. forest, lake)

Where was it? (Ex. on the ground, in the trees)

Behaviour

What was it doing? (Ex. eating, flying)

Was it alone or was it with others?

Date _____ Location _____

Can you identify the bird?

My bird is a: _____

Sound

Did you hear the bird sing? YES/NO

If yes, what did it sound like? _____

Size

Circle the size of the bird below.

Very small	Small	Medium	Big
Under 12 cm	12-22 cm	22-40 cm	Over 40 cm

Shape

Circle the appropriate silhouette for the bird below.



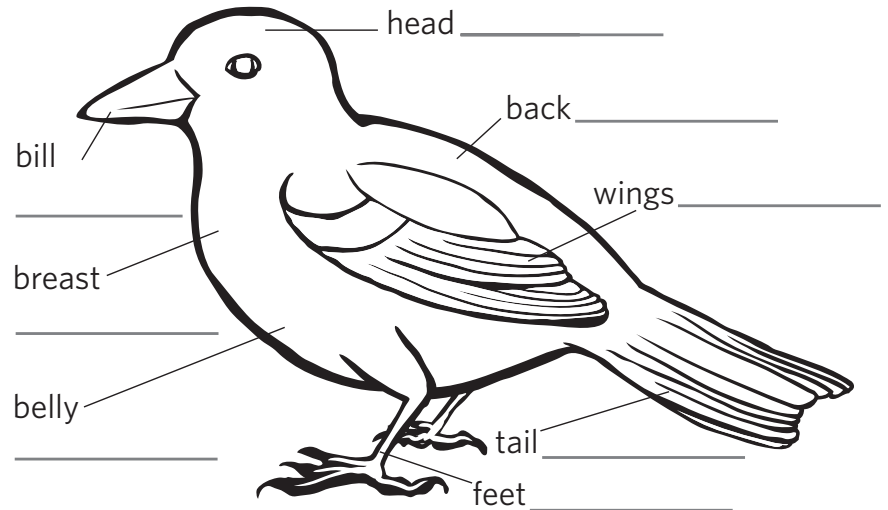
OTHER:

If the bird doesn't match one of these silhouettes, draw its shape.



Colour Pattern

Write down what colours you saw on different parts of the bird. When you get home you can colour it in.



Habitat

What habitat was it in? (Ex. forest, lake)

Where was it? (Ex. on the ground, in the trees)

Behaviour

What was it doing? (Ex. eating, flying)

Was it alone or was it with others?

Date _____ Location _____

Can you identify the bird?

My bird is a: _____

Sound

Did you hear the bird sing? YES/NO

If yes, what did it sound like? _____

Size

Circle the size of the bird below.

Very small	Small	Medium	Big
Under 12 cm	12-22 cm	22-40 cm	Over 40 cm

Shape

Circle the appropriate silhouette for the bird below.



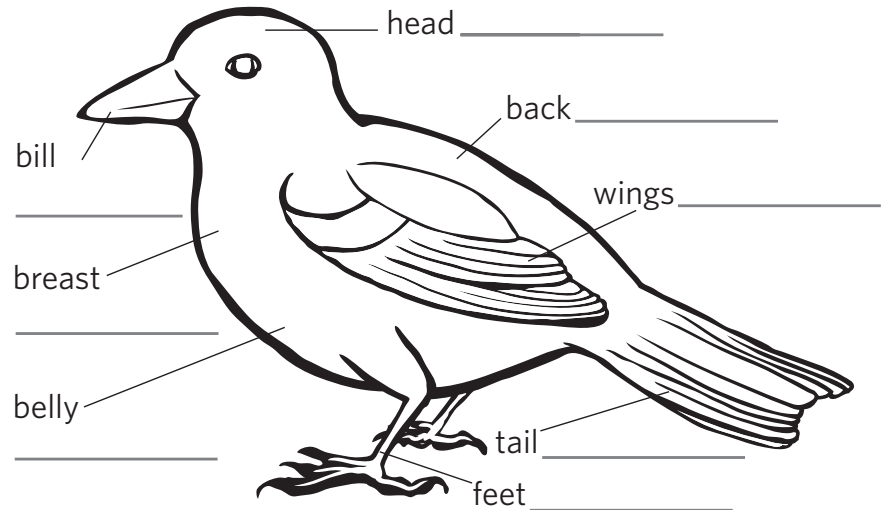
OTHER:

If the bird doesn't match one of these silhouettes, draw its shape.



Colour Pattern

Write down what colours you saw on different parts of the bird. When you get home you can colour it in.



Habitat

What habitat was it in? (Ex. forest, lake)

Where was it? (Ex. on the ground, in the trees)

Behaviour

What was it doing? (Ex. eating, flying)

Was it alone or was it with others?